



# Shard Close

East Hunsbury, Northampton

oriordanbond  
SALES & LETTINGS



## Shard Close

East Hunsbury  
NN4 0SE

PRICE £289,995

A modern three bedroom semi-detached property located within the popular East Hunsbury estate, close to local amenities and schooling. The property has been well maintained by the current owners.

The accommodation comprises entrance hall, sitting room open to dining room, kitchen with built-in oven, hob and extractor fan, first floor landing, three good size bedrooms and a re-fitted three-piece bathroom suite. Outside, the property is set back from the road with a large block paved driveway providing off road parking for several vehicles leading to an integral garage. To the rear is an enclosed garden with lawn and patio areas. Further benefits include uPVC double glazing and gas radiator heating. (B/829/M)

### Additional information

- Council Tax Band: C
- Energy Efficiency Rating:

### Viewing

Viewing strictly by appointment – details below

### Disclaimer

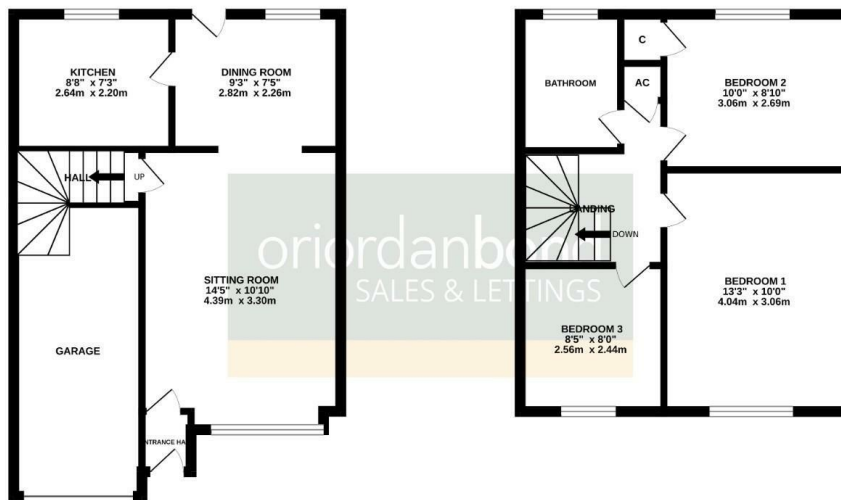
O’Riordan Bond Estate Agents Limited has not tested apparatus, equipment, fittings or services and so cannot verify they are in working order. The buyer is advised to obtain verification from their solicitor or surveyor.

O’Riordan Bond Hunsbury Sales  
01604 706007

[hunsbury@oriordanbond.co.uk](mailto:hunsbury@oriordanbond.co.uk)

GROUND FLOOR

1ST FLOOR



TOTAL FLOOR AREA: 829 sq. ft. (77.0 sq. m.) approx.

Whilst every attempt has been made to ensure the accuracy of the floorplan contained here, measurements of doors, windows, rooms and any other items are approximate and no responsibility is taken for any error, omission or mis-statement. This plan is for illustrative purposes only and should be used as such by any prospective purchaser. The services, systems and appliances shown have not been tested and no guarantee as to their operability or efficiency can be given.

Made with Metropix 62026

